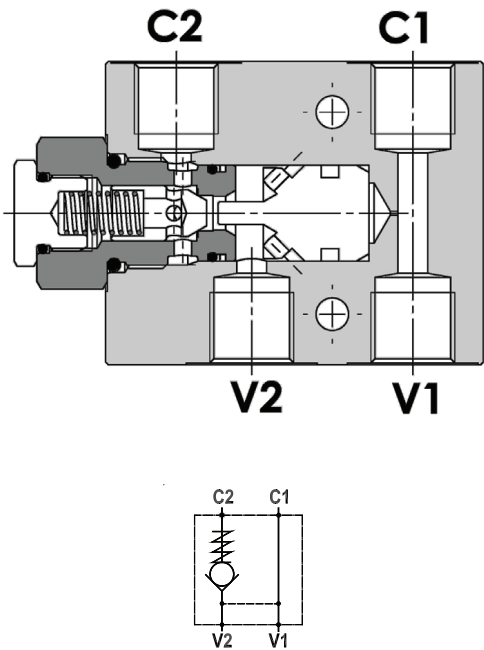


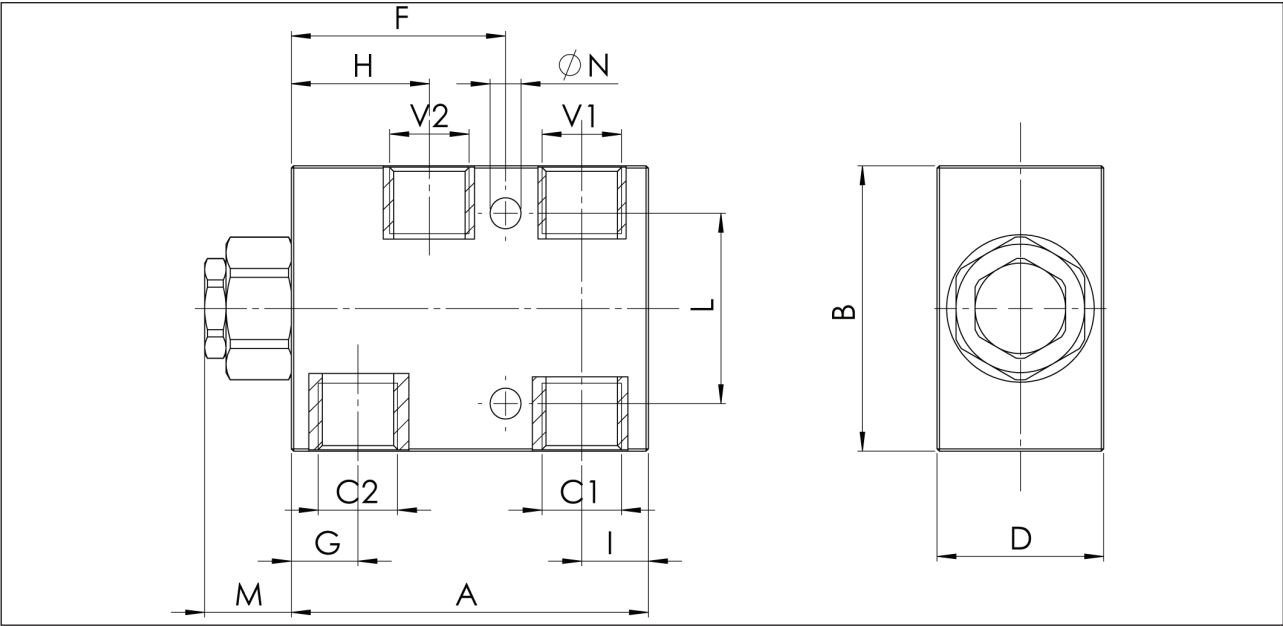
# FPSL Series

Single Pilot Operated Check Valves



## Features

- FPSL series valves are a single pilot operated check valve, line mounted version.
- The bodies are manufactured in aluminium and steel is available on request. Internal parts are in hardened and ground steel.
- Rated flows up to 85 l/min.
- Maximum pressure refer page 2.
- Cracking pressure - 2.5 bar standard, 5 -10 bar on request.



Type	Maximum Flow	Maximum Pressure S = Steel Body	V1 - C1 V2 - C2	A	B	D	F	G	H	I	L	M	N	Weight
	L/min	Bar	BSPP	mm	mm	mm	mm	mm	mm	mm	mm	mm	mm	Kg
FPS L 3/8	30	210 - 350 (S)	3/8"	75	60	35	45	14	29	14	40	18.5	6.5	0.480
FPS L 1/2	45	210 - 350 (S)	1/2"	95	70	35	55	21	38	19	40	15	8.5	0.620
FPS L 3/4	85	210 - 300 (S)	3/4"	135	90	50	80	30	57.5	22	50	14	10.5	1.650
Note: These valves, owing to their configuration - do not allow for a high discharge counterpressure.														
Pilot Ratio	FPSL 3/8			FPSL 1/2			FPSL 3/4							
	1 : 7			1 : 3.5			1 : 4							

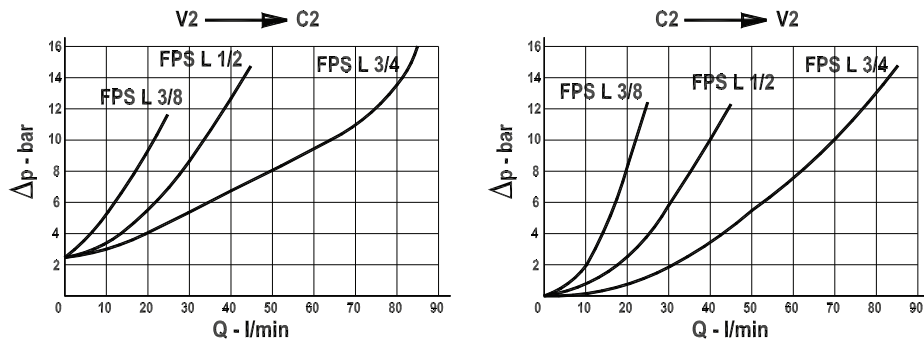
# FPSL Series

Single Pilot Operated Check Valves



## PRESSURE DROP CURVES

Oil viscosity 24 mm<sup>2</sup>/sec. (3,5 °E)  
Temperature 50 °C



## HOW TO ORDER

